

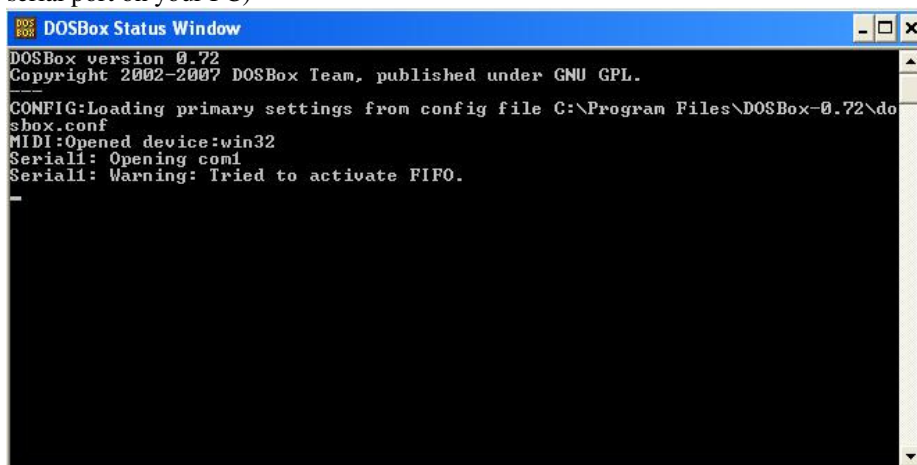
Using DosBox and WinXP together to run Allen Bradley PCIS software, this is for communicating to an SLC100 or 150 and using an PCC cable.

There are several versions of this cable, the adapter is an RS232 to RS422 cable, make sure your cable has the adapter on the end, otherwise you will have issues

You can get the cable from us if you don't have one at www.plctrainer.net

Down load DOSBox and install it you can find it here, I am running .72 <http://www.dosbox.com/>

This is what your status screen should look like, note the Serial port is opened and at com1 (you must have a real serial port on your PC)

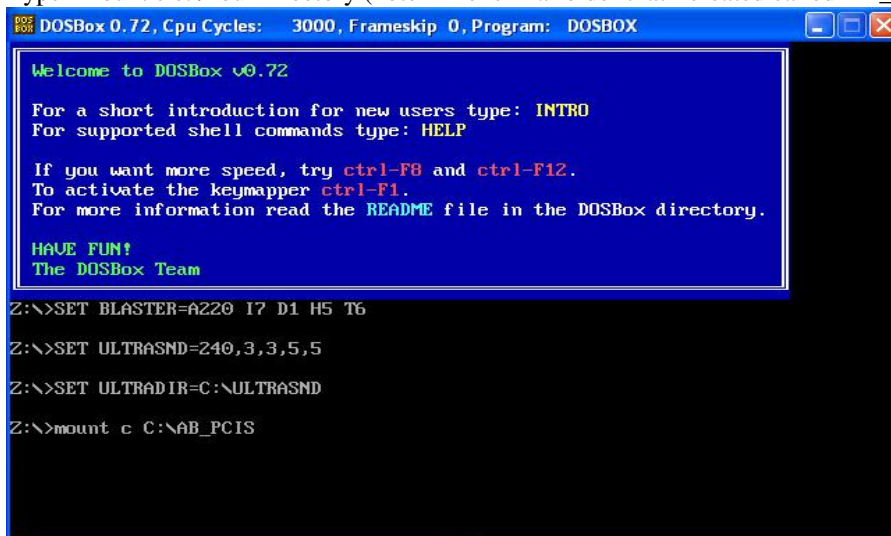


```
DOSBox Status Window
DOSBox version 0.72
Copyright 2002-2007 DOSBox Team, published under GNU GPL.
CONFIG:Loading primary settings from config file C:\Program Files\DOSBox-0.72\do
sbox.conf
MIDI:Opened device:win32
Serial1: Opening com1
Serial1: Warning: Tried to activate FIFO.
```

Place your PCIS file on you root directory as you will need to access the exe from the PCIS program

Double click your short cut on your desktop if you installed one or open the program, at the Z prompt (Z:\>)

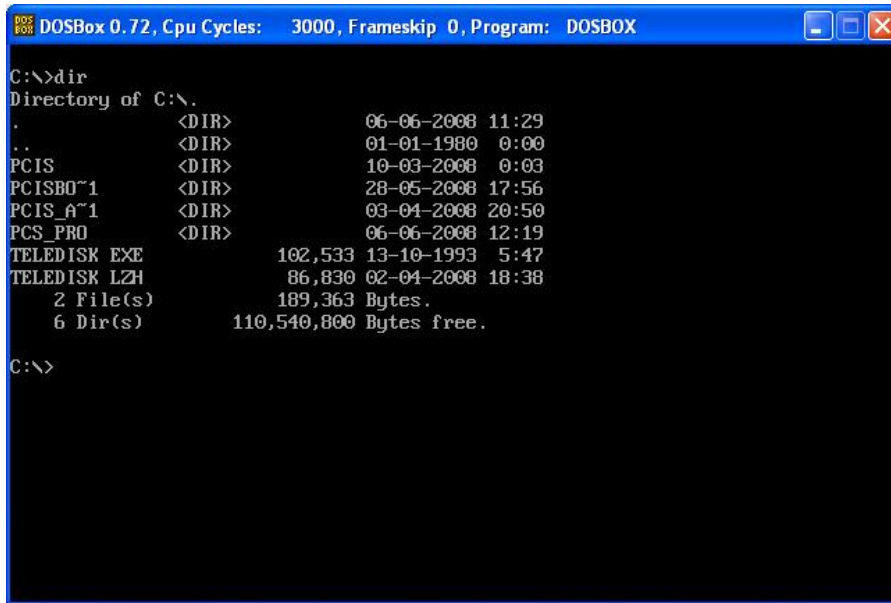
Type "mount c c:\YourDirectory (note mine is in a folder that I created called AB_PCIS)



```
DOSBOX 0.72, Cpu Cycles: 3000, Frameskip 0, Program: DOSBOX
Welcome to DOSBox v0.72
For a short introduction for new users type: INTRO
For supported shell commands type: HELP
If you want more speed, try ctrl-F8 and ctrl-F12.
To activate the keymapper ctrl-F1.
For more information read the README file in the DOSBox directory.
HAVE FUN!
The DOSBox Team
Z:\>SET BLASTER=A220 I7 D1 H5 T6
Z:\>SET ULTRASND=240,3,3,5,5
Z:\>SET ULTRADIR=C:\ULTRASND
Z:\>mount c C:\AB_PCIS
```

Then type c:\ and hit enter, this will change your prompt to c:\

Type dir and hit enter, this will show you your files that you have in that folder and now this is considered your c:\ drive

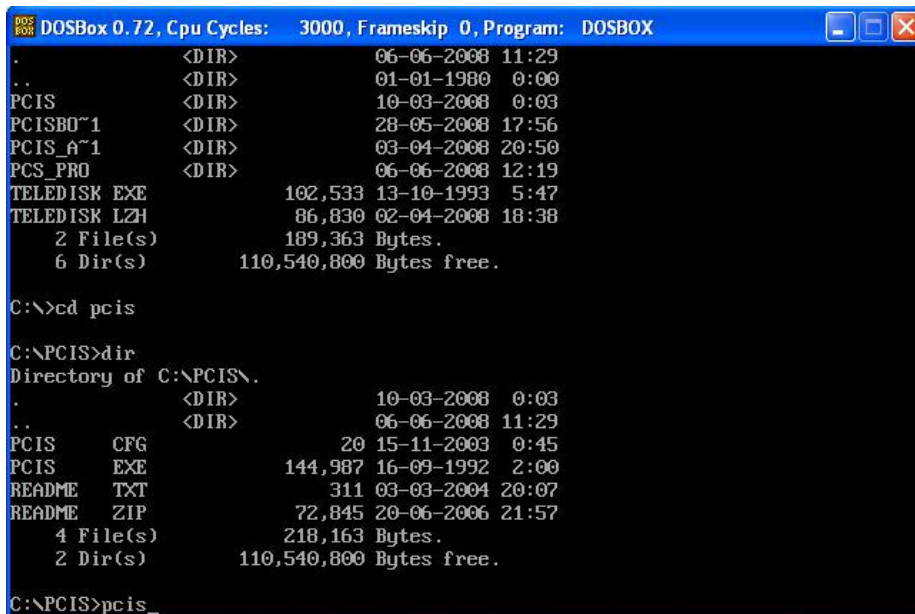


```
DOSBox 0.72, Cpu Cycles: 3000, Frameskip 0, Program: DOSBOX
C:\>dir
Directory of C:\.
.                <DIR>                06-06-2008  11:29
..               <DIR>                01-01-1980   0:00
PCIS             <DIR>                10-03-2008   0:03
PCISB0~1        <DIR>                28-05-2008  17:56
PCIS_A~1        <DIR>                03-04-2008  20:50
PCS_PRO         <DIR>                06-06-2008  12:19
TELEDISK EXE    102,533 13-10-1993   5:47
TELEDISK LZH    86,830 02-04-2008  18:38
 2 File(s)      189,363 Bytes.
 6 Dir(s)       110,540,800 Bytes free.

C:\>
```

I have another folder inside of that one so I must change directory again to access that one, I type cd pcis

This is for cd (change directory) and the folder pcis that is inside that directory



```
DOSBox 0.72, Cpu Cycles: 3000, Frameskip 0, Program: DOSBOX
.                <DIR>                06-06-2008  11:29
..               <DIR>                01-01-1980   0:00
PCIS             <DIR>                10-03-2008   0:03
PCISB0~1        <DIR>                28-05-2008  17:56
PCIS_A~1        <DIR>                03-04-2008  20:50
PCS_PRO         <DIR>                06-06-2008  12:19
TELEDISK EXE    102,533 13-10-1993   5:47
TELEDISK LZH    86,830 02-04-2008  18:38
 2 File(s)      189,363 Bytes.
 6 Dir(s)       110,540,800 Bytes free.

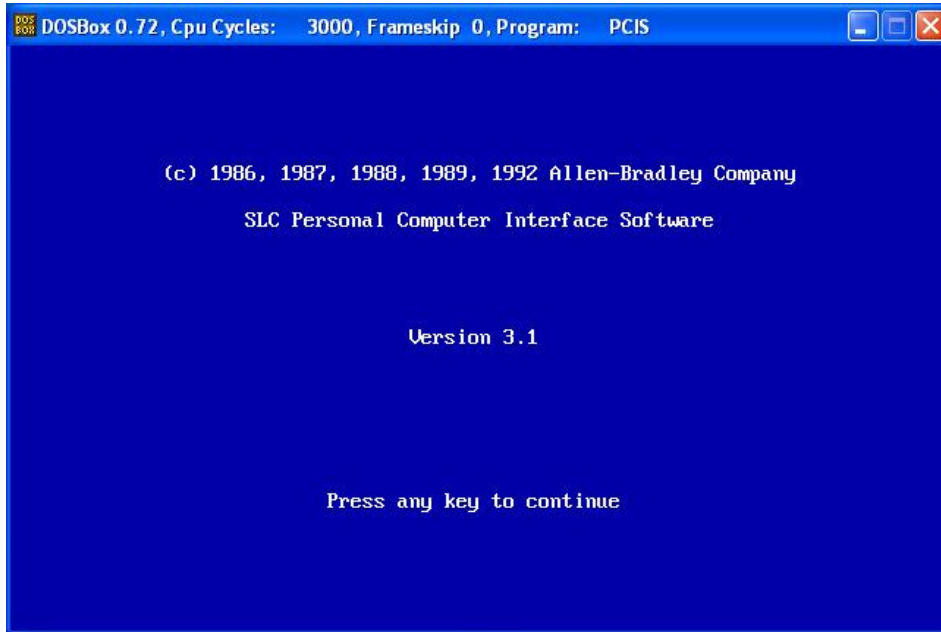
C:\>cd pcis

C:\PCIS>dir
Directory of C:\PCIS\.
.                <DIR>                10-03-2008   0:03
..               <DIR>                06-06-2008  11:29
PCIS             CFG                20 15-11-2003   0:45
PCIS             EXE            144,987 16-09-1992   2:00
README          TXT                311 03-03-2004  20:07
README          ZIP                72,845 20-06-2006  21:57
 4 File(s)      218,163 Bytes.
 2 Dir(s)       110,540,800 Bytes free.

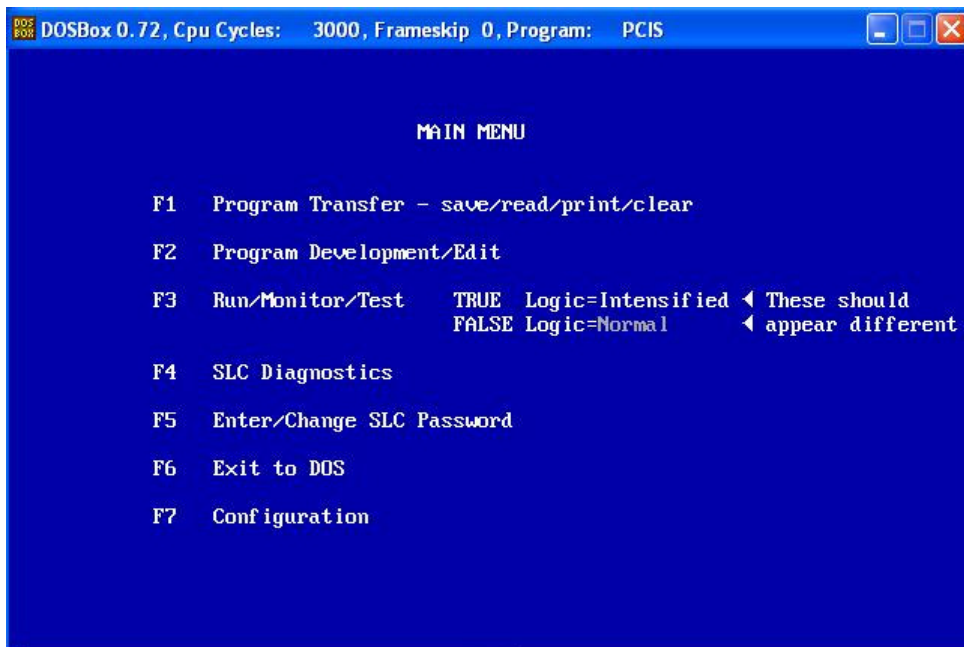
C:\PCIS>pcis_
```

Now type PCIS and this will run that exe file PCIS

If everything is running correctly you should see the screen below and your PCIS software is running



To test communication push f4 and this will tell you if you are communicating or not



Hope this helps,
Mark
info@plctrainer.net