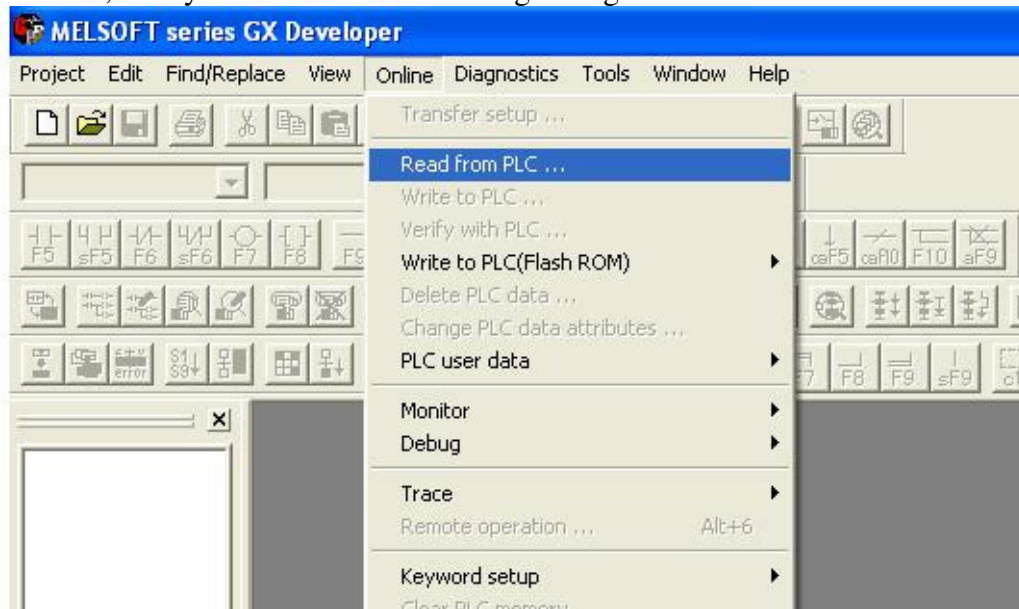


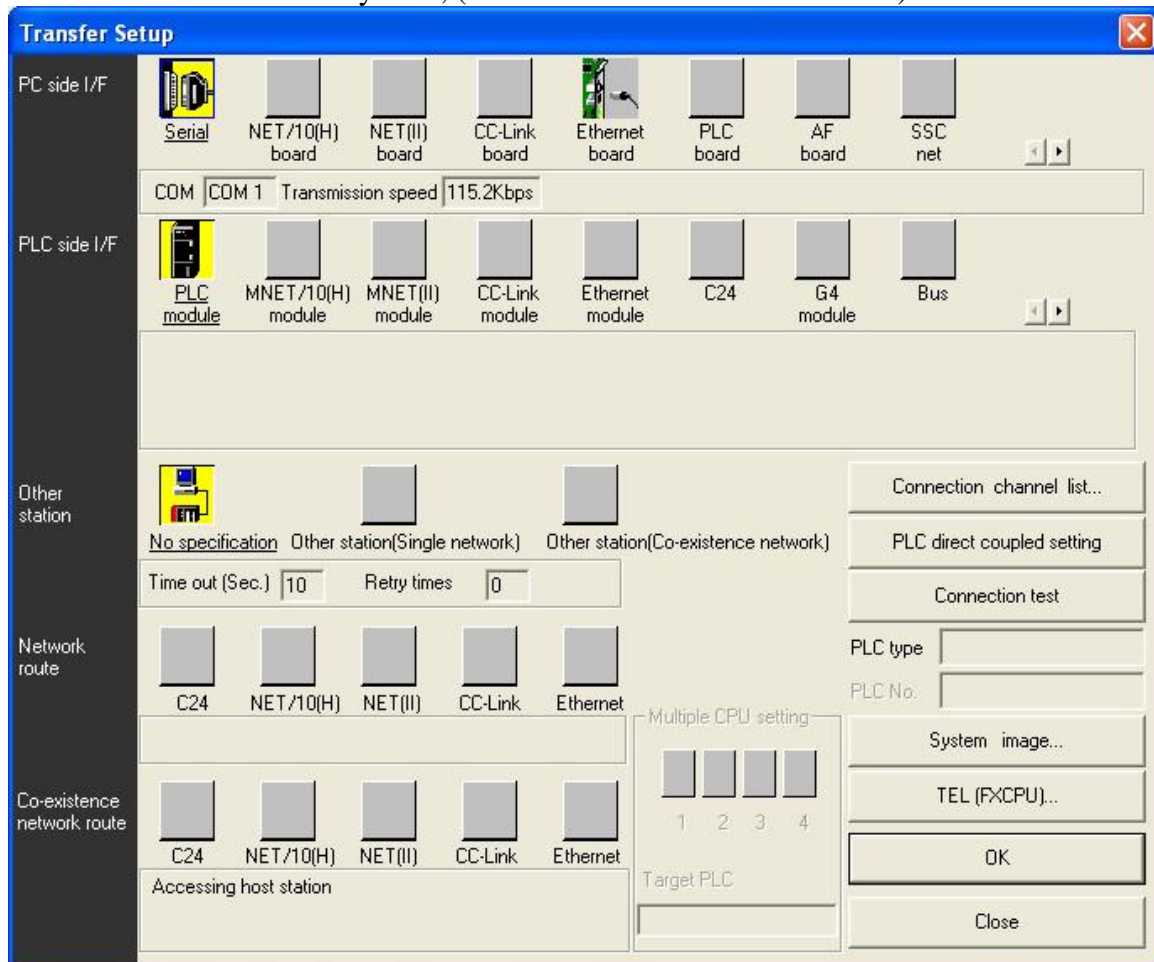
Open your new program under... start/All Programs/MELSOFT Application/GX Developer-FX

Now your program is running, go to the Read from PLC... so we can upload what's in the PLC, then you can see what's making the lights flash

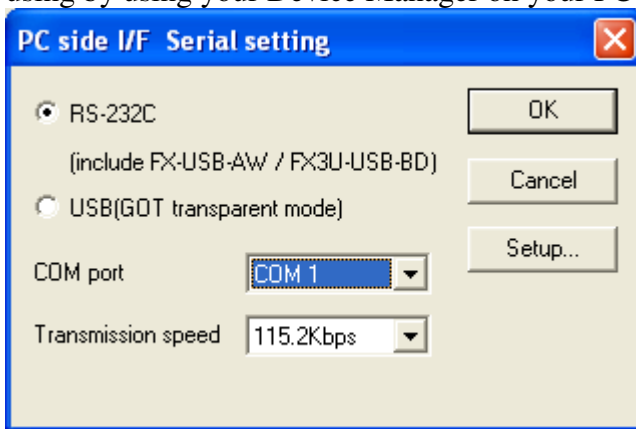


After you click on the read from PLC your communication screen will open, this is where you can setup different com's for your PLC,

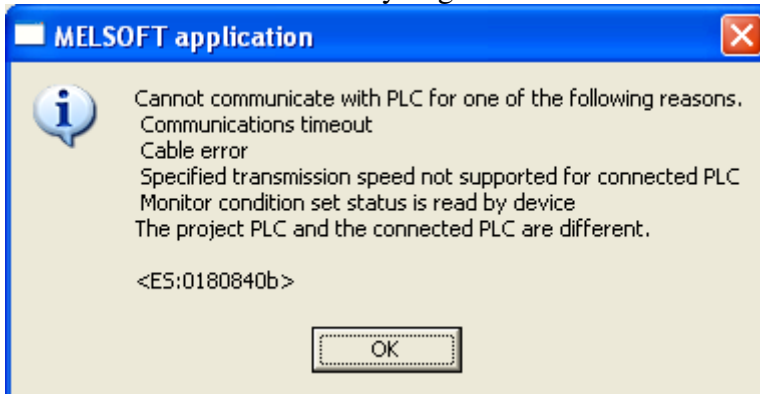
Double click on the serial symbol, (this will be for ALL of our cables)



Select your Com port (DO NOT USE USB) even if you are using our USB cable these are USB converters so leave it on RS-232C and find out you com port that your USB is using by using your Device Manager on your PC



Now Click test connection if you get this screen



You are not using the correct USB Com port number or speed setting is not correct