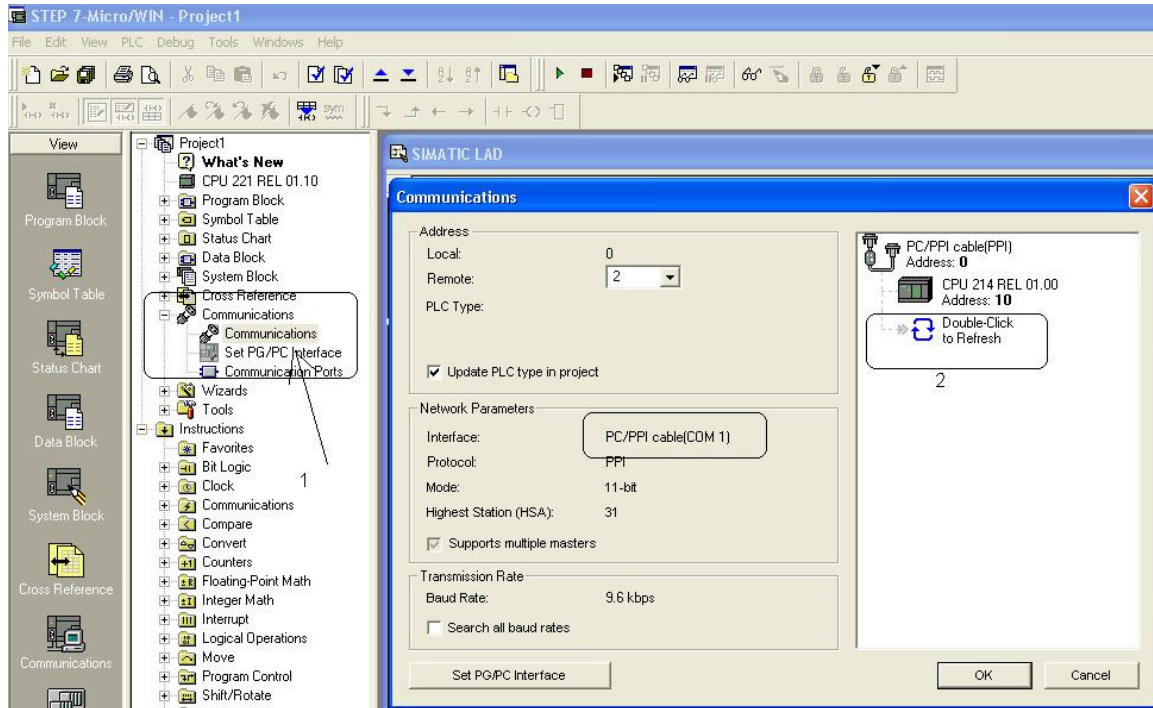
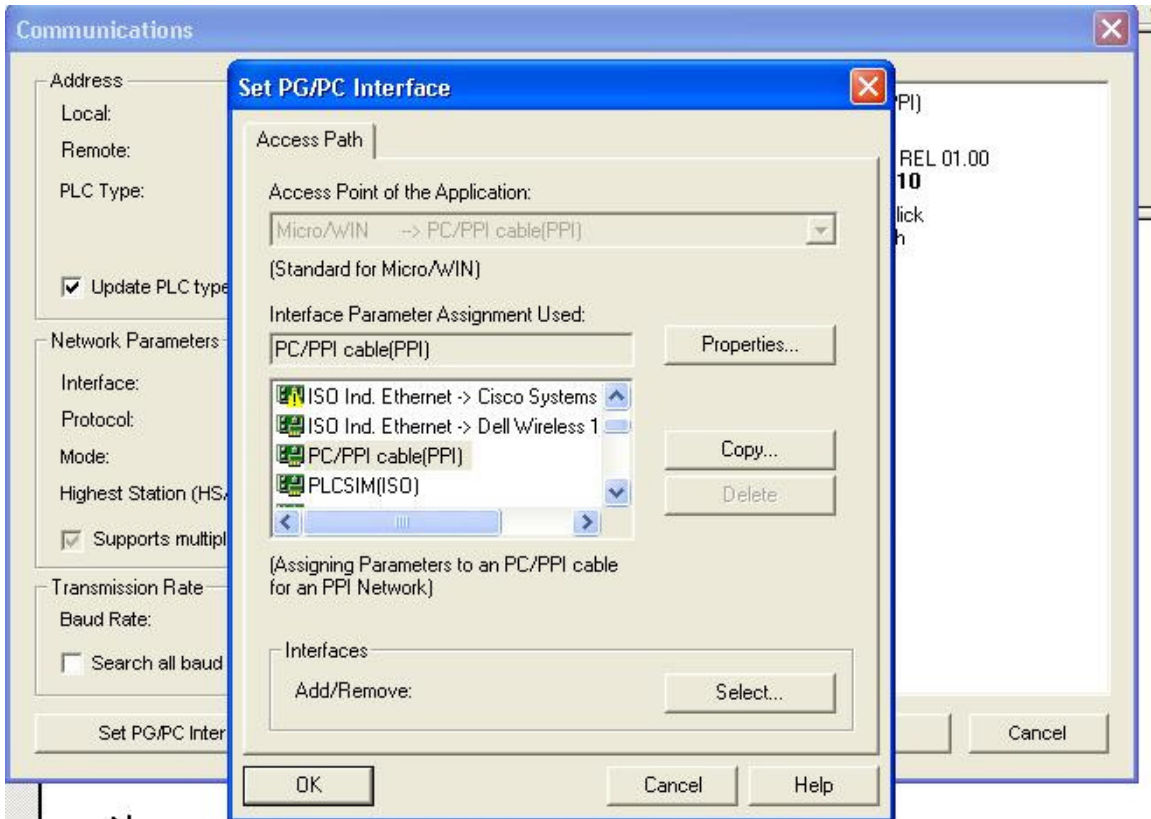


Siemens standard com configure setup (see or other set up for the USB procedure)



1. Open up the Communication file on the program tree (1)
2. Check your interface com setting, you should have PC/PPI selected the COM port is depending on what com port you are using, if it either one need to be changed then click the Set PC/PC Interface button on the bottom of the screen and change the settings to match (see next picture)
3. If your settings are correct double click one the refresh and your PLC will show up on the right screen, if not double check your settings
4. If your are having issues check to see if your other programs are not letting you access your com port, Allen Bradley and others have settings that will capture your com port, so make sure that RSLinx and other programs are not running.

SEE NEXT PAGE FOR PPI SETTINGS



After you click on the Set PG/PC Interface button you will see this screen, you need to have PC/PPI Cable (PPI) selected, to change your com port number click on properties. Then click OK

If you do not see PC/PPI Cable you will need to install your Siemens CD and install the drivers for this cable, there are two cables that can communicate with your PLC, PPI and MPI

The PPI will only work with the 200 series, the MPI will work with both 300/400 and the 200 series (but they cost more)

Hope this helps

Mark

www.plctrainer.net
info@plctrainer.net