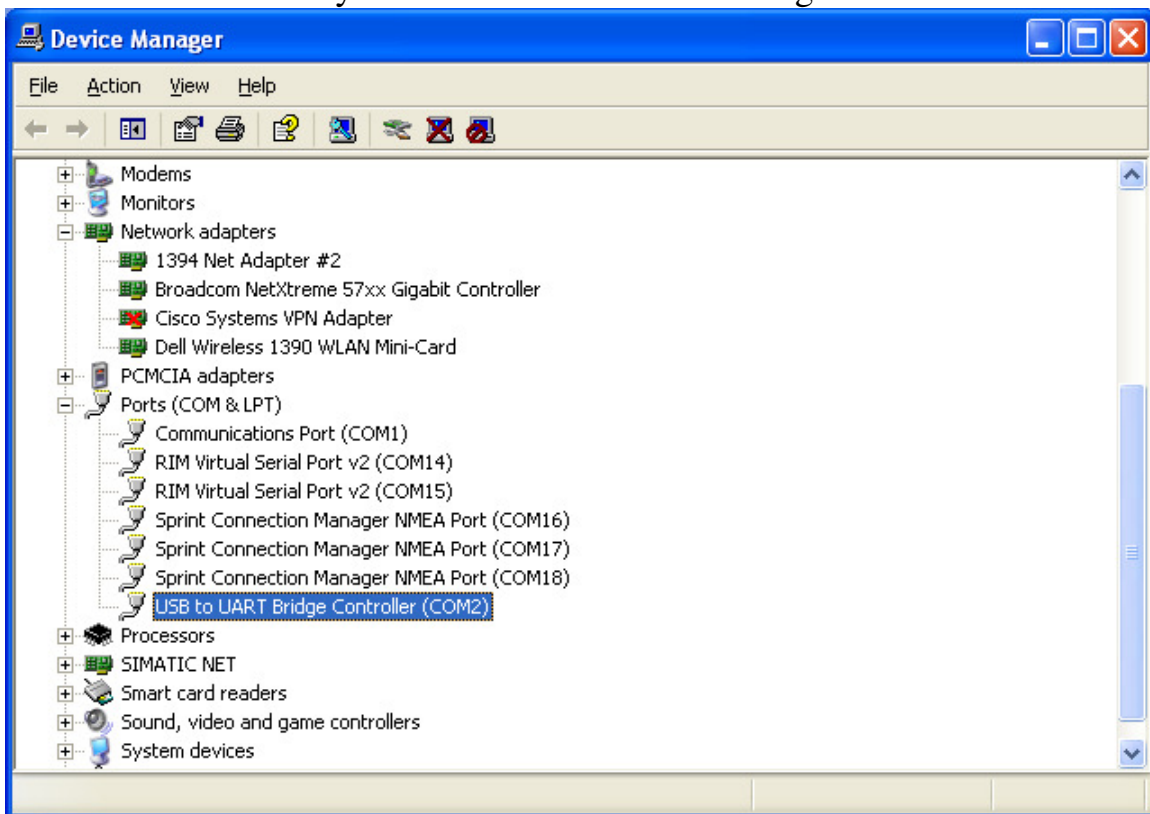


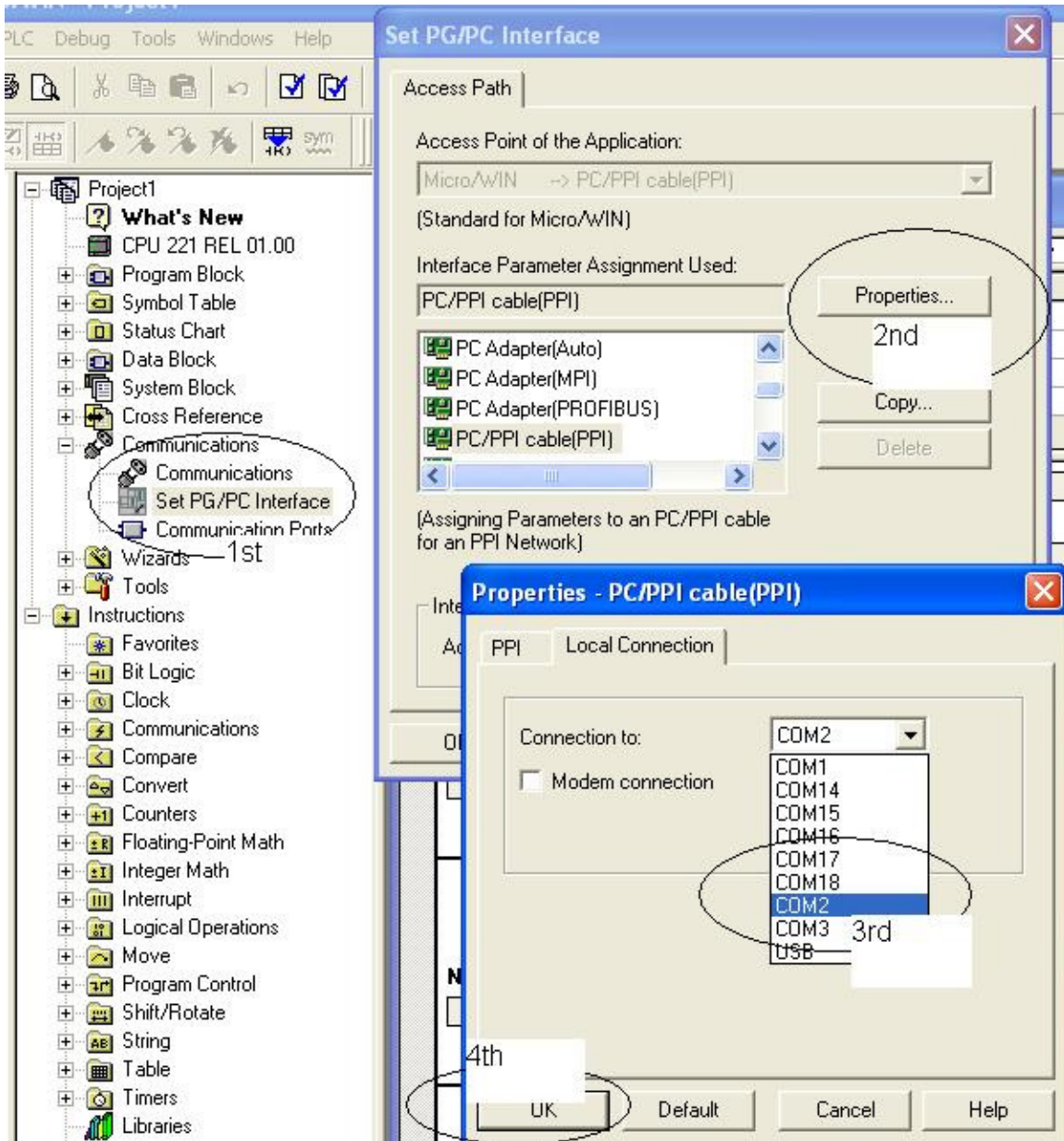
Use this procedure for setting up the USB/PPI for Siemens S7 200's

After you install your USB cable you will be prompted by windows to install the drivers, you may need to do it twice (only on some computers)

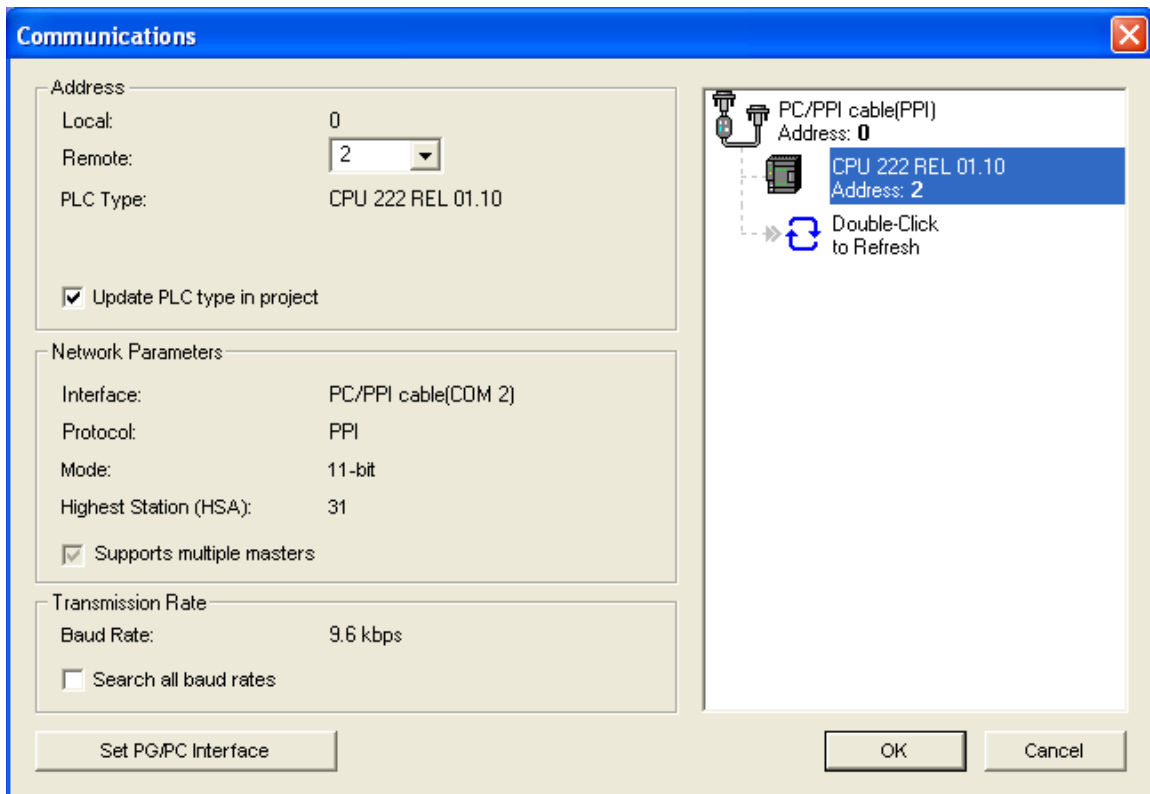
After your cable drivers are installed look under your device manager to see what come port your new cable is using, see the pic below, in this example you will see that we are using COM2, note this because you will need it for you MicroWIN software settings



Next open your MicroWIN software 1st click on SET PG/PC this will open a pop up window, 2nd then click on properties, 3rd select your com port that you are using, 4th click OK



Next double click the communications tab (just above set PG/PC) this will open your communication window, verify that your COM PC/PPI is set to the correct number and double click the blue arrows to locate your CPU see below



Hope this helps

Mark

www.plctrainer.net

info@plctrainer.net